

TAKOMA PARK PEDIATRICS

Pediatrics & Adolescents

OFFICE POLICIES

Effective January 1, 2006; Modified January 9, 2009

Visits

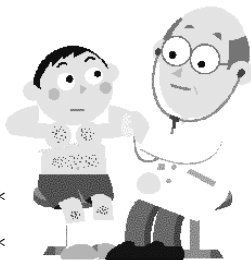
Routine Well Physicals
APPOINTMENT REQUIRED

(NO EXCEPTIONS)

10:30 am – 4:00 pm

- After Hospital
- 10 days – 2 weeks
- 1 Month
- 2 Months*
- 4 Months*
- 6 Months*
- 9 Months
- 12 Months*
- 15 Months*
- 18 Months
- 2 Years
- After 2 Years, physicals are only one time per year.

* Shots



Appointments

- Pre-Operation
(1 week before surgery)
- Ear Piercing
- Travel Shots
(2 weeks before travel)
- **Saturday physicals** are for babies less than 1 year
- Only **2 physicals per family** on one date.

Sick/Non-Routine Walk-Ins

SICK CHILDREN ARE ONLY SEEN
DURING WALK-IN HOURS

Mon-Fri 9-10:30 am

Saturdays 9-12 pm

- Fever
- Vomiting
- Coughing
- Cuts, etc.

- Child will be immediately seen if he/she has **wheezing, very high fever (at least 101°), a deep cut, broken bones, seizures, etc.**

Late Arrivals & Cancellations

- If you are late more than **15 minutes, you will be rescheduled for a later date.**
- If you do not call to cancel **after 3 times, your insurance will be informed.**

Relatives & Friends

- Children brought by friends and relatives must have the guardian's **written consent before we see them.**

Co-Payments

- Co-Payments are **due before** you go into the exam room.
- We accept: **Cash, credit cards (No Discover), and checks (less than \$20)**

Price List

| | |
|------------------|-----------|
| Well Physical | \$100 |
| Sick/Non-Routine | \$60 |
| Missing Shots | \$10/shot |
| Ear Piercing | \$50 |

TRAVEL VACCINES (CHILDREN & ADULTS)

| | |
|---|-------|
| Consultation Fee (includes Malaria prescription if required) | \$40 |
| Yellow Fever | \$105 |
| Typhoid | \$85 |
| Hepatitis A | \$95 |
| Hepatitis A IG (Infants <12 months) | \$75 |

Travel vaccines and ear piercing must be paid with cash or credit card (No Discover).